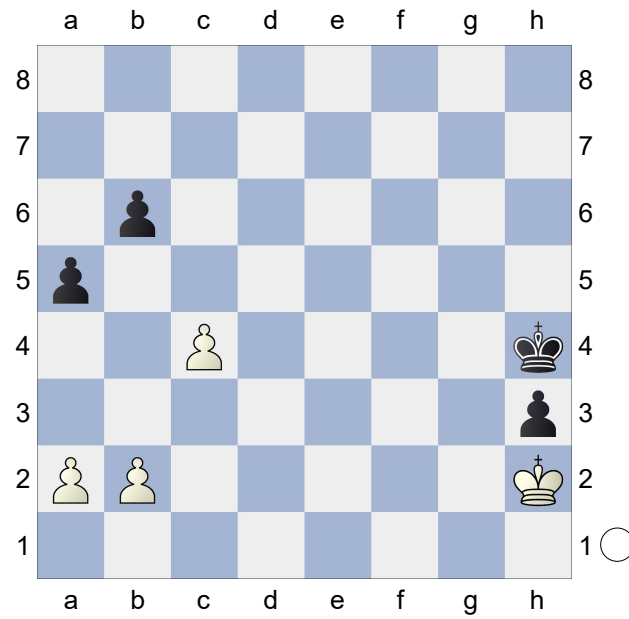


1) Basic Techniques

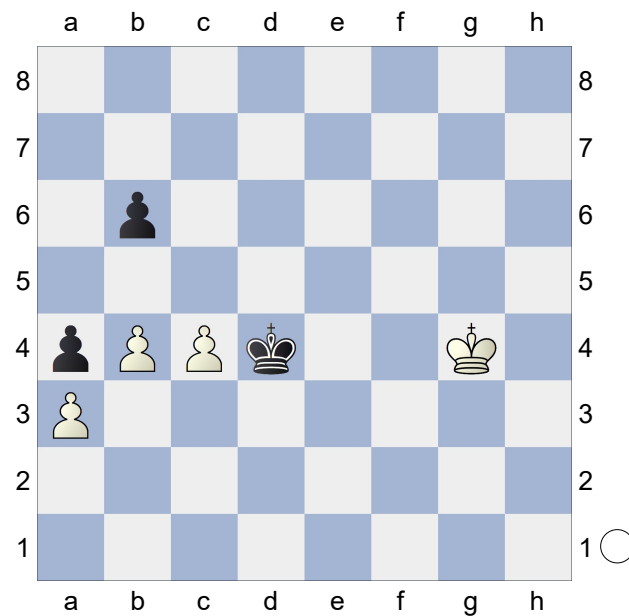
Exercise #1.1



White to move

1) Basic Techniques

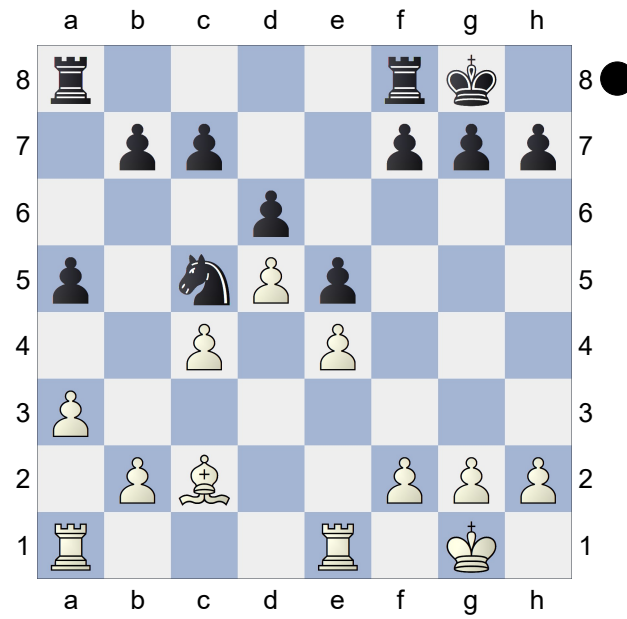
Exercise #1.2



White to move

□ 1) Basic Techniques

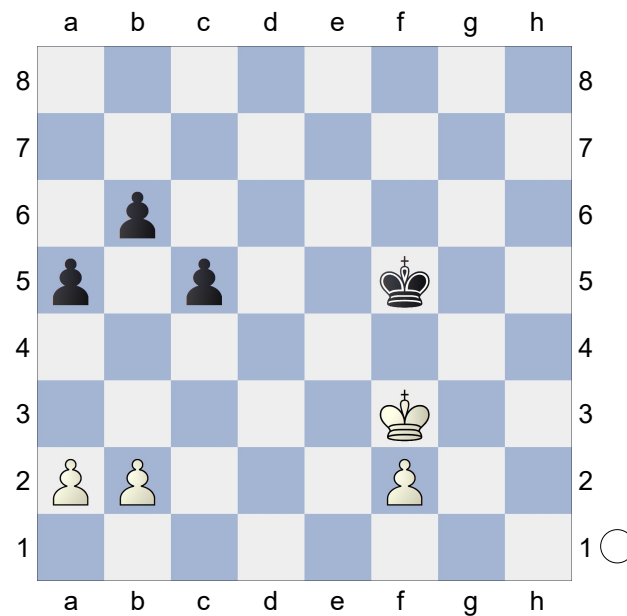
■ Exercise #3.1



Black to move

□ 1) Basic Techniques

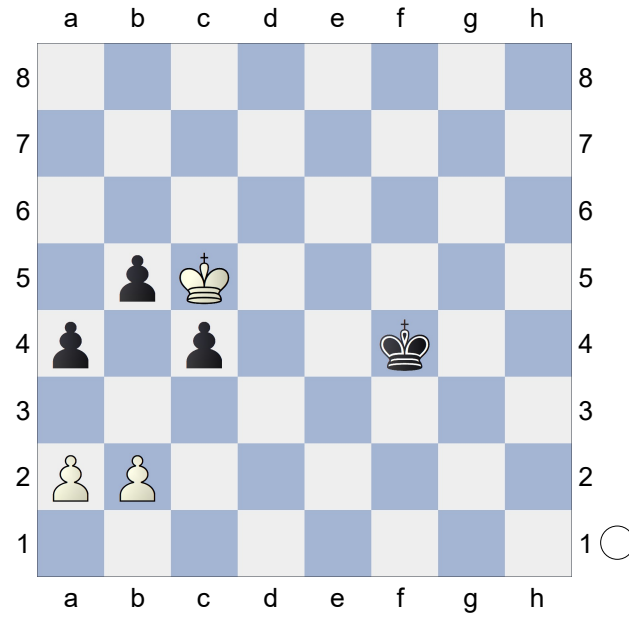
■ Exercise #5.1



White to move

□ 1) Basic Techniques

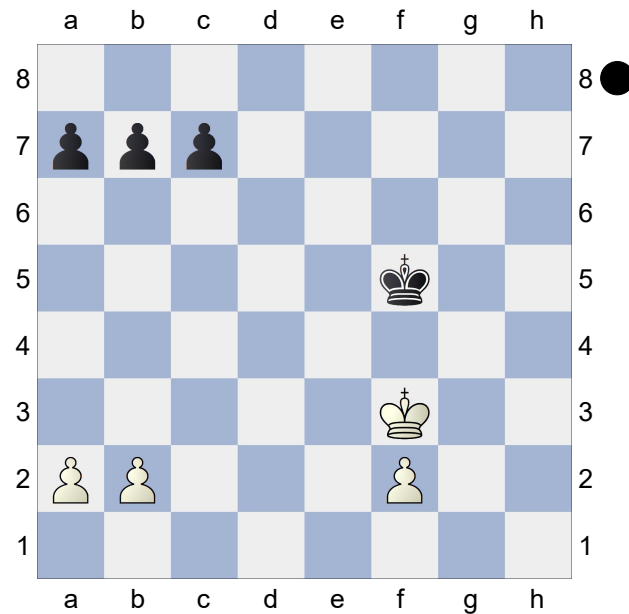
■ Exercise #5.2



White to move

□ 1) Basic Techniques

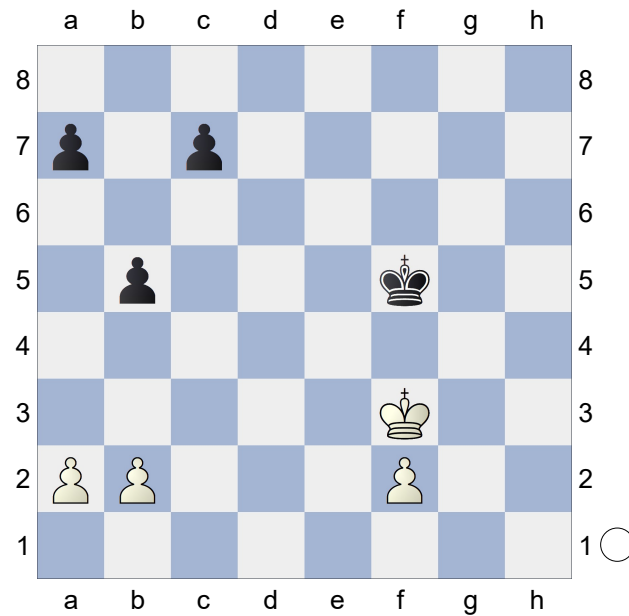
■ Exercise #6



In this position, five pawn moves out of six enable Black to make a draw, as do the three logical king moves (...Ke5/e6/f6). Which moves are losing? Why?

1) Basic Techniques

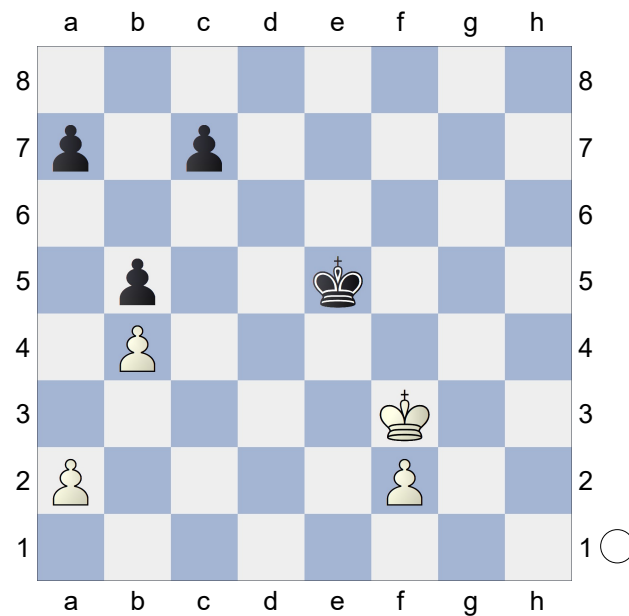
Exercise #6.1



White to move

1) Basic Techniques

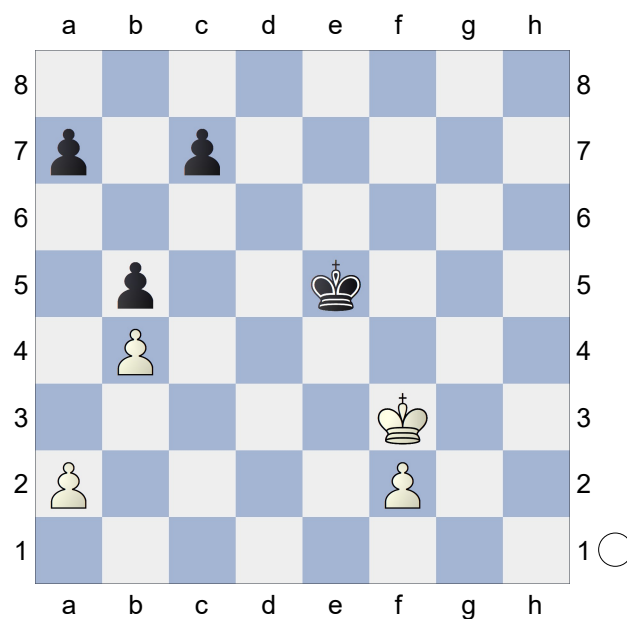
Exercise #6.1a



Can White to move win?

1) Basic Techniques

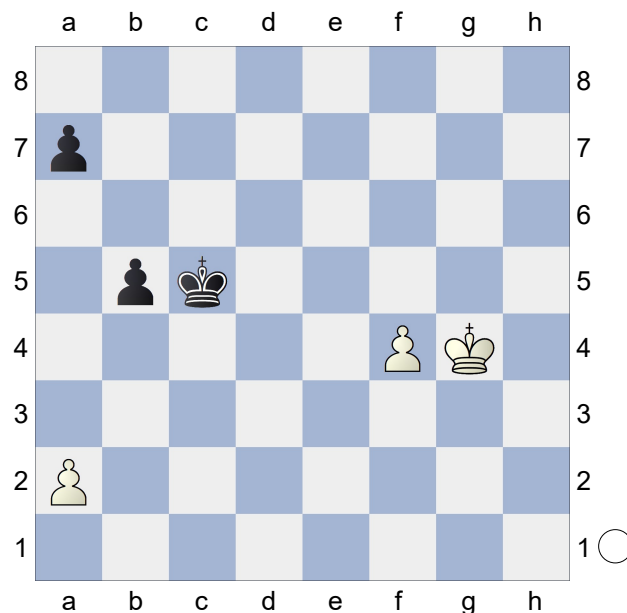
Exercise #6.1b



Why is 1.Ke3 a draw?

1) Basic Techniques

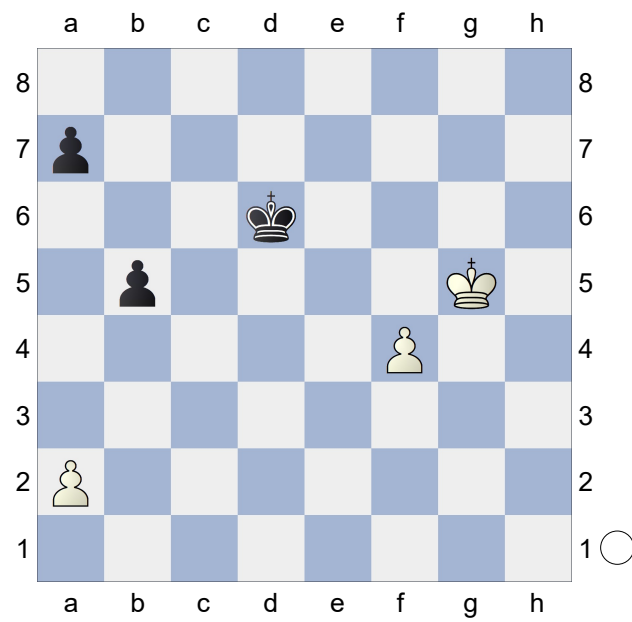
Exercise #6.1c



White to move.

□ 1) Basic Techniques

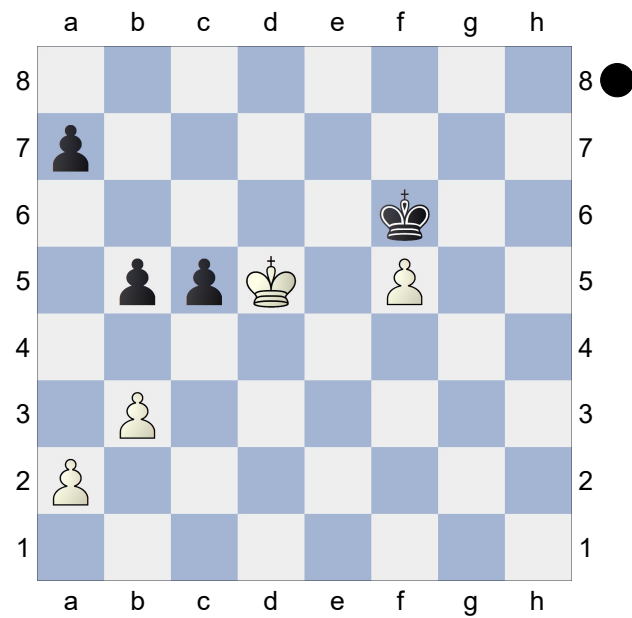
■ Exercise #6.1d



White to move.

□ 1) Basic Techniques

■ Exercise #6.2



Black to move.